

DEVILS LAKE, NORTH DAKOTA

AL-5305 (FAA)

ILS or LOC RWY 31

DEVILS LAKE RGNL (DVL)

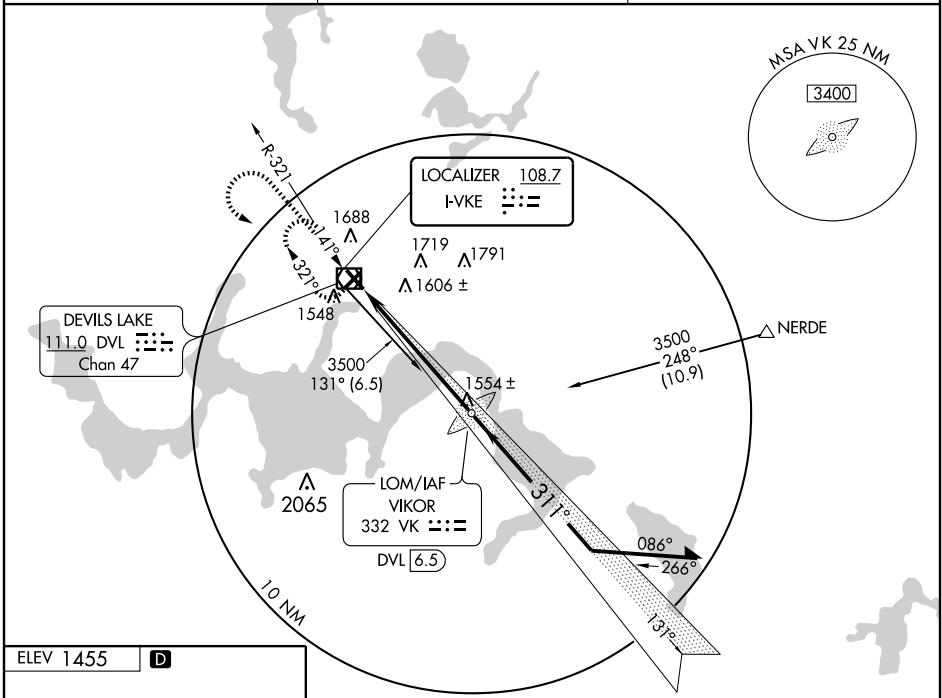
LOC I-VKE 108.7	APP CRS 311°	Rwy Idg TDZE Apt Elev	4866 1448 1455
---------------------------	------------------------	-----------------------------	---

NA Inoperative table does not apply to S-ILS 31.
For inoperative MALSR increase S-LOC 31 Cat A, B, C visibility to 1 mile.

MALSR

MISSED APPROACH: Climb to 3500 then left turn direct DVL VOR/DME and hold.

AWOS-3 125.875	GRAND FORKS RADIO 122.3	UNICOM 122.8 (CTAF) 0
--------------------------	-----------------------------------	---------------------------------



NC-1, 02 JUN 2011 to 30 JUN 2011

NC-1, 02 JUN 2011 to 30 JUN 2011

ELEV 1455 **D**

HIRL Rwy 13-31 **0**
REIL Rwy 13
REIL Rwys 3 and 21 **0**
MIRL Rwy 3-21 **0**

FAF to MAP 6 NM

Knots	60	90	120	150	180
Min:Sec	6:00	4:00	3:00	2:24	2:00

DME OR ADF REQUIRED

CATEGORY	A	B	C	D
S-ILS 31		1698-¾	250 (300-¾)	
S-LOC 31		1800-¾	352 (400-¾)	
CIRCLING	2000-1 545 (600-1)		2000-1½ 545 (600-1½)	2080-2 625 (700-2)

LOM DVL 6.5
3465
131°
3500
311°
3500
GS 3.00°
TCH 52

Remain within 10 NM

DEVILS LAKE, NORTH DAKOTA
Amdt 1A 10266

48°07'N - 98°54'W

DEVILS LAKE RGNL (DVL)

ILS or LOC RWY 31