

WAAS CH <b>78314</b> <b>W13A</b>	APP CRS <b>131°</b>	Rwy Idg <b>5506</b> TDZE <b>1456</b> Apt Elev <b>1456</b>
--	------------------------	---

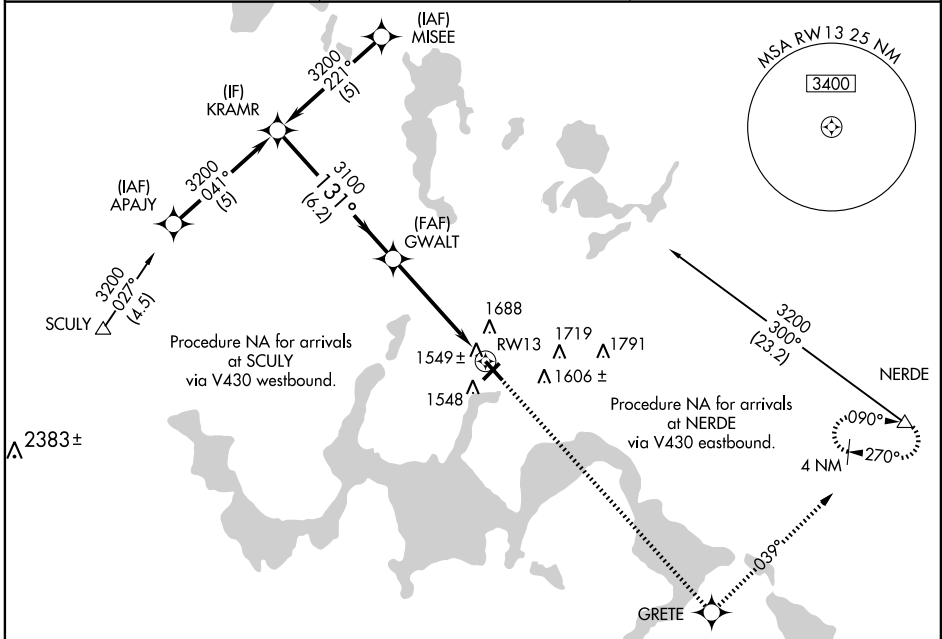
# RNAV (GPS) RWY 13

DEVILS LAKE RGNL (DVL)

**⚠** Baro-VNAV NA when using Jamestown altimeter setting. For uncompensated Baro-VNAV systems, LNAV/VNAV NA below -17°C (2°F) or above 46°C (114°F). DME/DME RNP-0.3 NA. Visibility reduction by helicopters NA. When local altimeter setting not received, use Jamestown altimeter setting and increase all DA 172 feet, and all MDA 180 feet, increase LPV all Cats visibility ¾ mile. LNAV/VNAV all Cats ½ mile, LNAV Cat C ¼ mile, Cat D ½ mile, Circling Cats C and D ½ mile. VDP NA with Jamestown altimeter setting.

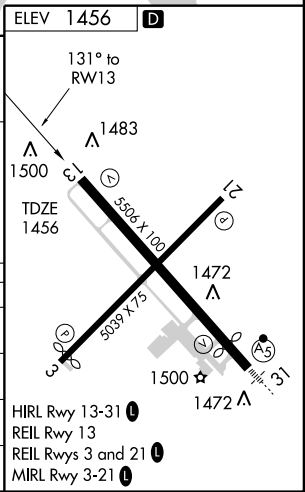
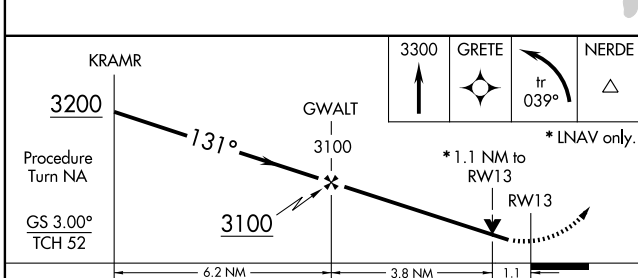
**MISSED APPROACH:**  
Climb to 3300 direct GRETE and left turn on track 039° to NERDE and hold.

AWOS-3 <b>125,875</b>	GRAND FORKS RADIO <b>122.3</b>	UNICOM <b>122.8 (CTAF)</b>
--------------------------	-----------------------------------	-------------------------------



NC-1, 12 JAN 2012 to 09 FEB 2012

NC-1, 12 JAN 2012 to 09 FEB 2012



CATEGORY	A	B	C	D
LPV DA		1768-1	312 (400-1)	
LNAV/VNAV DA		1956-1¾	500 (500-1¾)	
LNAV MDA	1860-1	404 (500-1)	1860-1¼	404 (500-1¼)
CIRCLING	2000-1	544 (600-1)	2000-1½	2080-2
			544 (600-1½)	624 (700-2)