

WAAS CH 93608 W03A	APP CRS 038°	Rwy Idg THRE 1450 Apt Elev 1456
--	------------------------	---

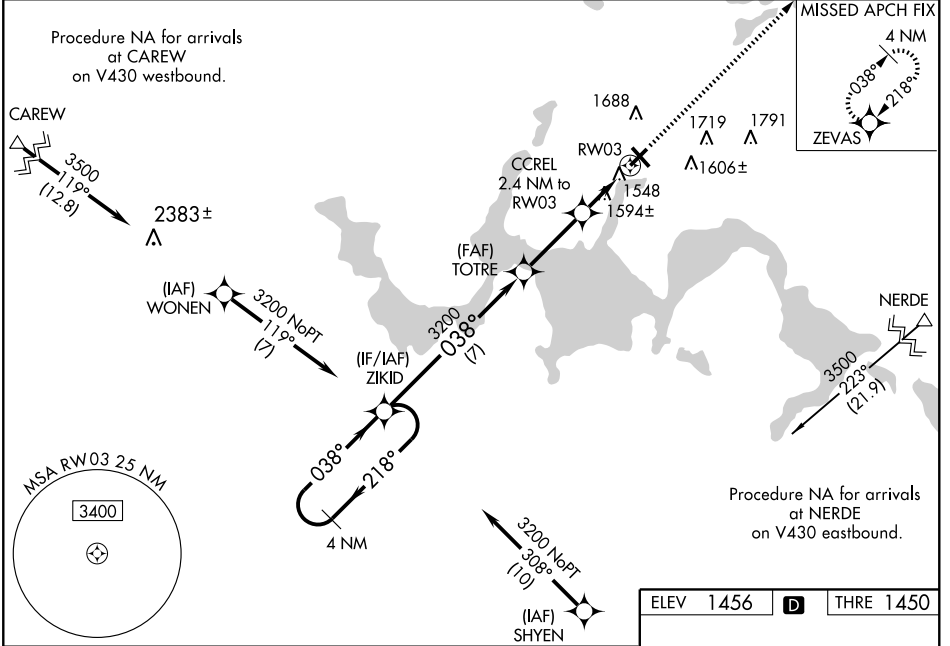
RNAV (GPS) RWY 3

DEVILS LAKE RGNL (DVL)

⚠ Baro-VNAV NA when using Jamestown altimeter setting. For uncompensated Baro-VNAV systems, LNAV/VNAV NA below -17°C (2°F) or above 34°C (93°F). DME/DME RNP-0.3 NA. Visibility reduction by helicopters NA. When local altimeter setting not received, use Jamestown altimeter setting and increase all DA 172 feet, and all MDA 180 feet, increase LPV all Cats visibility 3/8 mile and LNAV/VNAV all Cats visibility 1/2 mile, LNAV Cat C and D visibility 5/8 mile, and Circling Cats C and D visibility 1/2 mile. When VGSI inoperative, Straight-In/ Circling Rwy 3 NA at night.

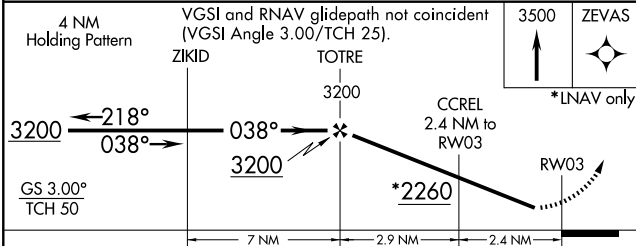
MISSED APPROACH:
Climb to 3500 direct ZEVAS and hold.

AWOS-3 125.875	GRAND FORKS RADIO 122.3	UNICOM 122.8(CTAF) Ⓛ
--------------------------	-----------------------------------	---------------------------------------

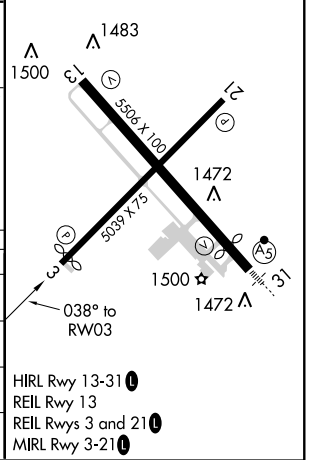


NC-1, 12 JAN 2012 to 09 FEB 2012

NC-1, 12 JAN 2012 to 09 FEB 2012



ELEV 1456	D	THRE 1450
-----------	----------	-----------



CATEGORY	A	B	C	D
LPV DA		1700-1	250 (300-1)	
LNAV/VNAV DA		1709-1	259 (300-1)	
LNAV MDA	1860-1	410 (500-1)	1860-1 1/8	410 (500-1 1/8)
CIRCLING	2000-1	544 (600-1)	2000-1 1/2	2080-2
			544 (600-1 1/2)	624 (700-2)

HIRL Rwy 13-31 **Ⓛ**
REIL Rwy 13
REIL Rws 3 and 21 **Ⓛ**
MIRL Rwy 3-21 **Ⓛ**