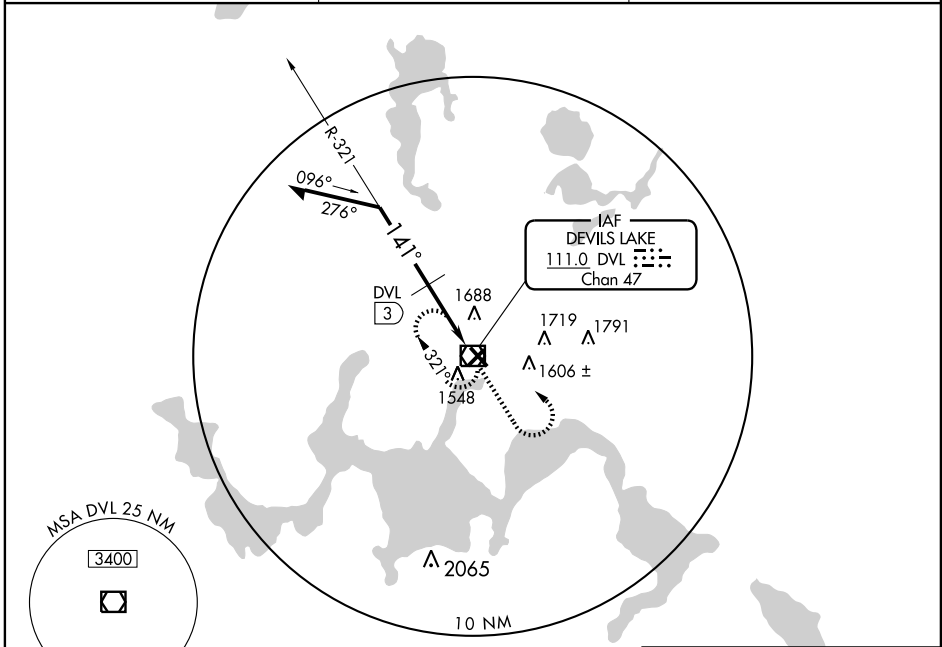


VOR/DME DVL 111.0 Chan 47	APP CRS 141°	Rwy Idg TDZE 1455 Apt Elev 1455
---	------------------------	---

VOR RWY 13
DEVILS LAKE RGNL(DVL)

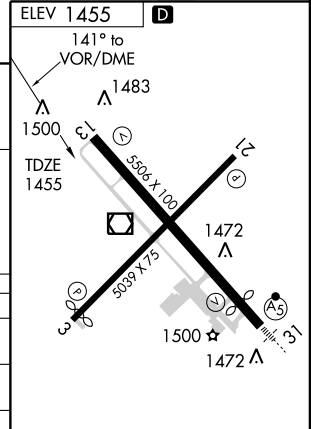
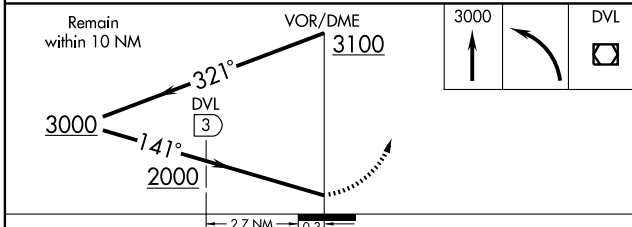
Visibility reduction by helicopters NA. MISSED APPROACH: Climb to 3000 then left turn direct DVL VOR/DME and hold.

AWOS-3 125,875	GRAND FORKS RADIO 122.3	UNICOM 122.8 (CTAF) 1
--------------------------	-----------------------------------	--



NC-1, 12 JAN 2012 to 09 FEB 2012

NC-1, 12 JAN 2012 to 09 FEB 2012



CATEGORY	A	B	C	D
S-13	2000-1	545 (600-1)	2000-1½ 545 (600-1½)	2000-1¾ 545 (600-1¾)
CIRCLING	2000-1	545 (600-1)	2000-1½ 545 (600-1½)	2080-2 625 (700-2)
DME MINIMUMS				
S-13	1940-1	485 (500-1)	1940-1¼ 485 (500-1¼)	1940-1½ 485 (500-1½)
CIRCLING	2000-1	545 (600-1)	2000-1½ 545 (600-1½)	2080-2 625 (700-2)

HIRL Rwy 13-31 **1**
REIL Rwy 13
REIL Rws 3 and 21 **1**
MIRL Rwy 3-21 **1**