

VOR RWY 21

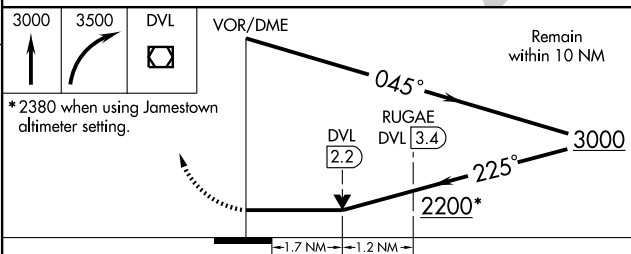
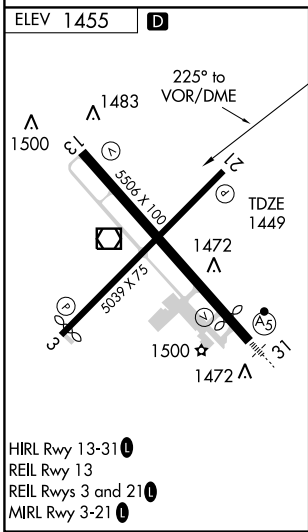
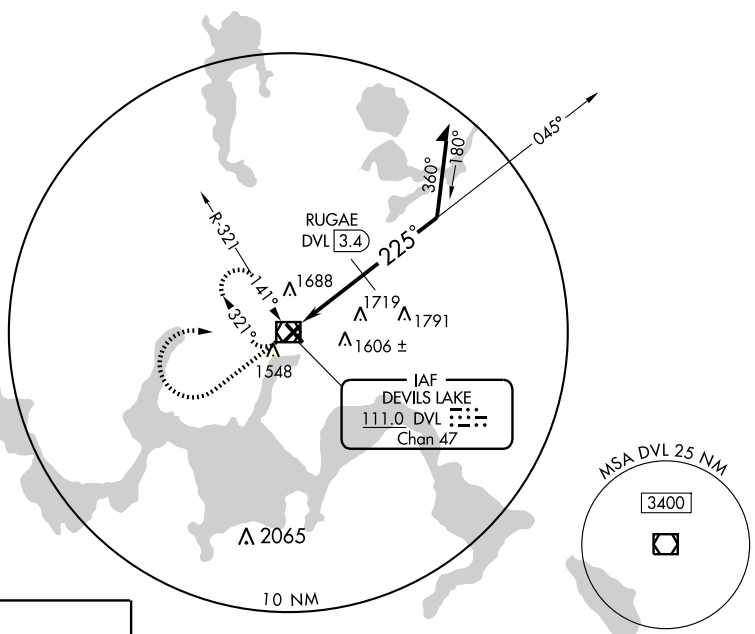
DEVILS LAKE RGNL (DVL)

VOR/DME DVL 111.0 Chan 47	APP CRS 225°	Rwy Idg 5039 TDZE 1449 Apt Elev 1455
---	------------------------	---

⚠ When local altimeter setting not received, use Jamestown altimeter setting and increase all MDA 180 feet, increase S-21 and Circling visibility Cat. A ½ mile, Cat. C and D ½ mile, increase RUGAE FIX MINIMUMS S-21 and Circling visibility Cat. B to 1¼, Cat. C to 2¼ and Cat. D to 2½. VDP NA when using Jamestown altimeter setting.

MISSED APPROACH: Climb to 3000 then climbing right turn to 3500 direct DVL VOR/DME and hold.

AWOS-3 125.875	GRAND FORKS RADIO 122.3	UNICOM 122.8 (CTAF) 0
--------------------------	-----------------------------------	---------------------------------



*2380 when using Jamestown altimeter setting.

CATEGORY	A		B		C		D	
	MDA	Visibility	MDA	Visibility	MDA	Visibility	MDA	Visibility
S-21	2200-1	751 (800-1)	2200-1¼	751 (800-1¼)	2200-2¼	751 (800-2¼)	2200-2½	751 (800-2½)
CIRCLING	2200-1	745 (800-1)	2200-1¼	745 (800-1¼)	2200-2¼	745 (800-2¼)	2200-2½	745 (800-2½)
RUGAE FIX MINIMUMS								
S-21	2020-1	571 (600-1)	2020-1½	571 (600-1½)	2020-1¾	571 (600-1¾)	2080-2	625 (700-2)
CIRCLING	2020-1	565 (600-1)	2020-1½	565 (600-1½)	2080-2	625 (700-2)		

NC-1, 12 JAN 2012 to 09 FEB 2012

NC-1, 12 JAN 2012 to 09 FEB 2012