

VOR RWY 3

DEVILS LAKE RGNL (DVL)

VOR/DME DVL 111.0 Chan 47	APP CRS 030°	Rwy Idg 4856 TDZE 1450 Apt Elev 1455
---	------------------------	---

▼ Visibility reduction by helicopters NA.
▲ When local altimeter setting not received, use Jamestown altimeter setting and increase all MDA 180 feet, increase S-3 and Circling visibility Cat. A/B and D ½ mile, Cat. C ½ mile, increase CAMPG FIX MINIMUMS S-3 and Circling Cat. C and D visibility ½ mile.

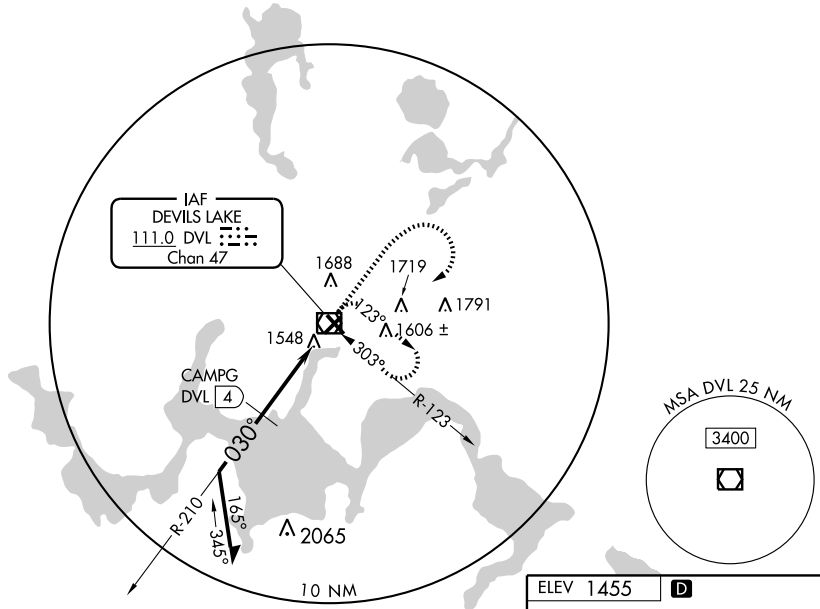
MISSED APPROACH: Climb to 3000 then climbing right turn to 3500 direct DVL VOR/DME and hold.

AWOS-3
125.875

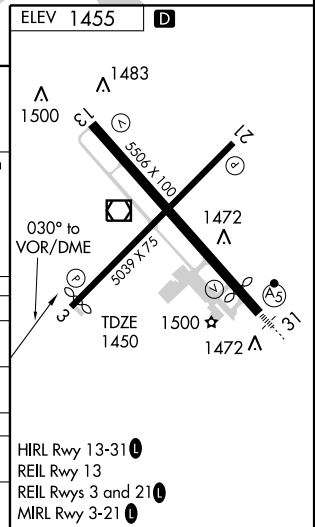
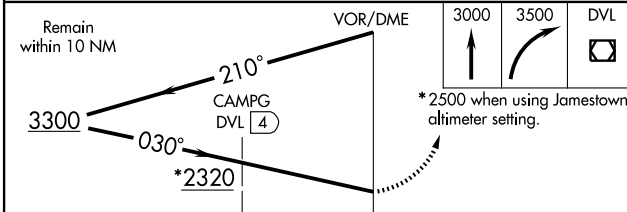
GRAND FORKS RADIO
122.3

UNICOM
122.8 (CTAF) 0

NC-1, 12 JAN 2012 to 09 FEB 2012



NC-1, 12 JAN 2012 to 09 FEB 2012



CATEGORY	VOR/DME			
	A	B	C	D
S-3	2320-1 870 (900-1)	2320-1¼ 870 (900-1¼)	2320-2½ 870 (900-2½)	2320-2¾ 870 (900-2¾)
CIRCLING	2320-1 865 (900-1)	2320-1¼ 865 (900-1¼)	2320-2½ 865 (900-2½)	2320-2¾ 865 (900-2¾)
CAMPG FIX MINIMUMS				
S-3	1800-1 350 (400-1)		1800-1¼ 350 (400-1¼)	
CIRCLING	2000-1 545 (600-1)		2000-1½ 545 (600-1½)	