

DEVILS LAKE, NORTH DAKOTA


AL-5305 (FAA)

VOR/DME DVL 111.0 Chan 47	APP CRS 303°	Rwy Idg 4866 TDZE 1448 Apt Elev 1455
---	------------------------	---

VOR RWY 31

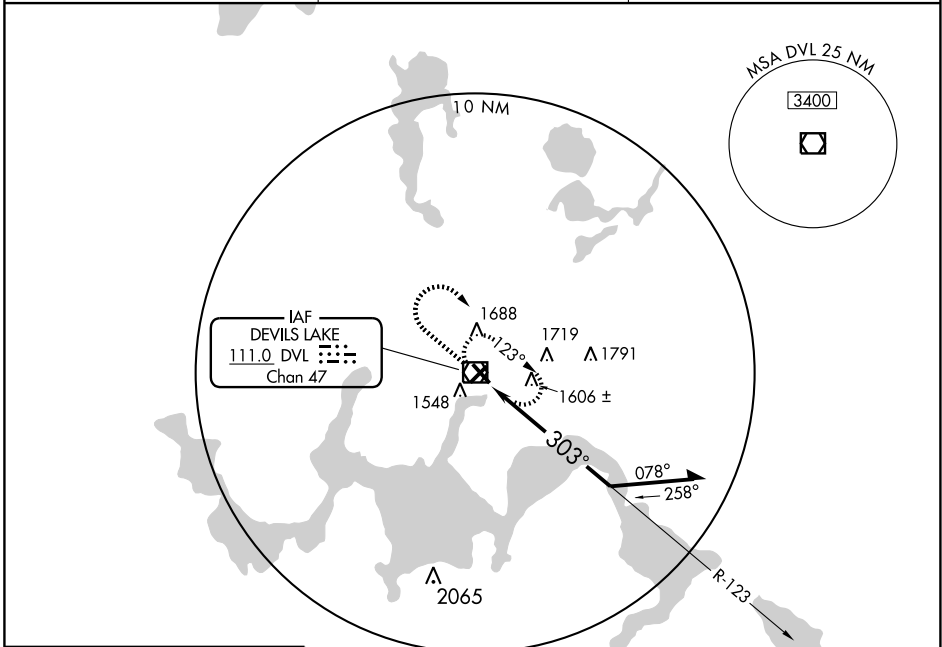
DEVILS LAKE RGNL(DVL)

V S-31 Cats A and B visibility increased ¼ mile for inoperative MALSR.

MALSR 

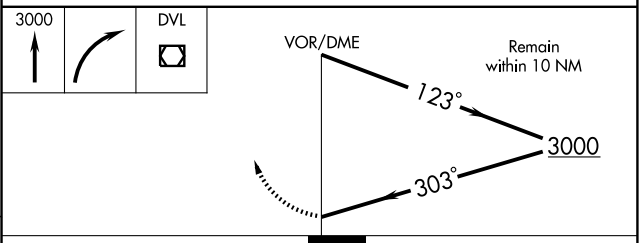
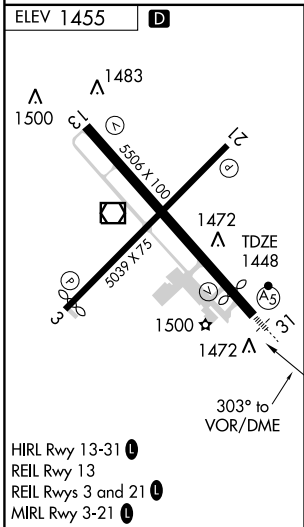
MISSED APPROACH: Climb to 3000 then right turn direct DVL VOR/DME and hold.

AWOS-3 125.875	GRAND FORKS RADIO 122.3	UNICOM 122.8 (CTAF)
--------------------------	-----------------------------------	-------------------------------



NC-1, 12 JAN 2012 to 09 FEB 2012

NC-1, 12 JAN 2012 to 09 FEB 2012



CATEGORY	A	B	C	D
S-31	1920-¾ 472 (500-¾)		1920-1 472 (500-1)	
CIRCLING	2000-1 545 (600-1)		2000-1½ 545 (600-1½)	2080-2 625 (700-2)

DEVILS LAKE, NORTH DAKOTA
Orig-A 10266

48°07'N - 98°54'W

DEVILS LAKE RGNL(DVL) VOR RWY 31