

SAGINAW, MICHIGAN

AL-6474 (FAA)

# ILS or LOC/DME RWY 27

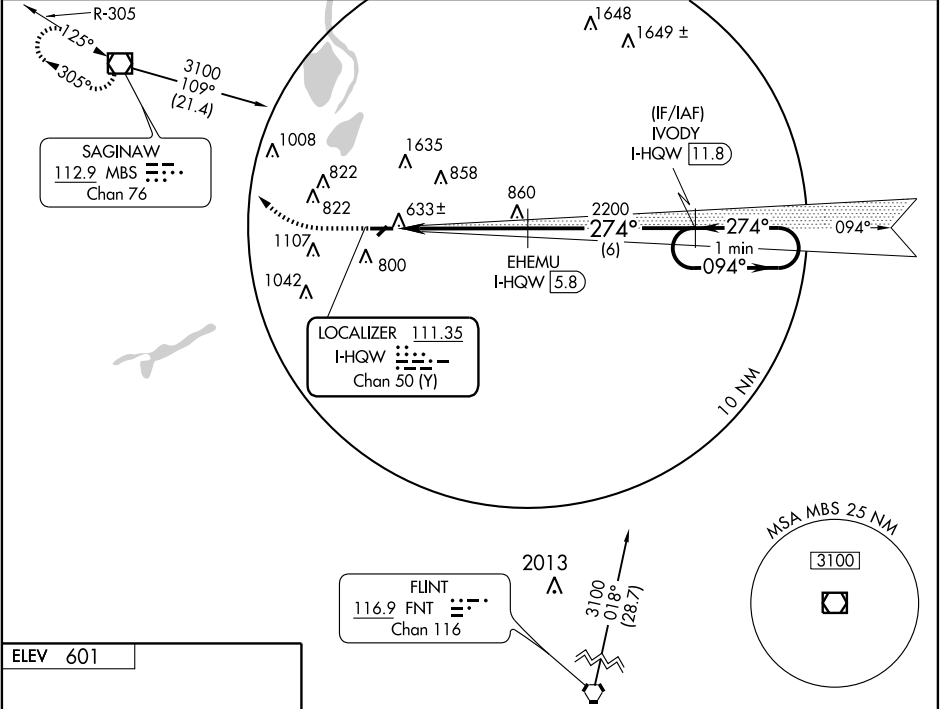
SAGINAW COUNTY H. W. BROWNE (HYX)

LOC/DME I-HQW <b>111.35</b> Chan 50 (Y)	APP CRS <b>274°</b>	Rwy Idg TDZE Apt Elev	<b>5000</b> <b>600</b> <b>601</b>
---	------------------------	-----------------------------	---

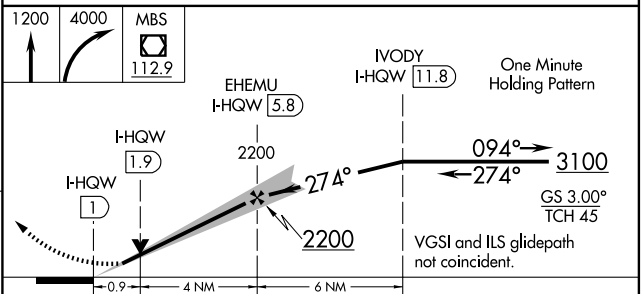
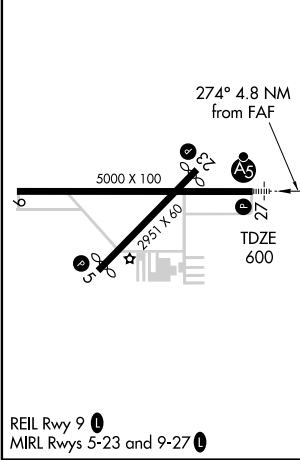
**ASR** When local altimeter setting not received, use Saginaw MBS Intl altimeter setting and increase all DA 36 feet, increase all MDA 40 feet. VDP NA when using MBS Intl altimeter setting.

**MALSR** MISSED APPROACH: Climb to 1200 then climbing right turn to 4000 direct MBS VOR/DME and hold, continue climb-in-hold to 4000.

AWOS-3 <b>118.325</b>	SAGINAW APP CON * <b>120.95 235.625</b>	GCO <b>121.725</b>	UNICOM <b>122.8</b> (CTAF) <b>U</b>
--------------------------	--	-----------------------	--



ELEV 601
----------



CATEGORY	A	B	C	D
S-ILS 27		800-½ 200 (200-½)		NA
S-LOC 27		900-½ 300 (300-½)		NA
CIRCLING	1100-1	499 (500-1)	1100-1½ 499 (500-1½)	NA

SAGINAW, MICHIGAN  
Orig-A 09239

SAGINAW COUNTY H. W. BROWNE (HYX)  
43°26'N - 83°52'W  
**ILS or LOC/DME RWY 27**

EC-1, 19 NOV 2009 to 17 DEC 2009

EC-1, 19 NOV 2009 to 17 DEC 2009