

SAGINAW, MICHIGAN

AL-6474 (FAA)

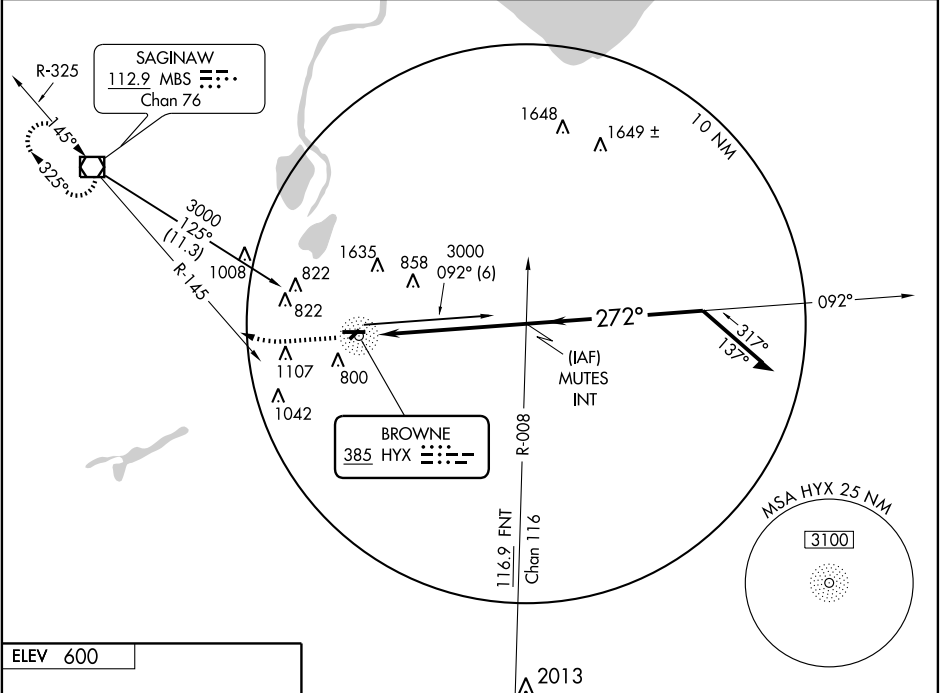
NDB RWY 27

SAGINAW COUNTY H. W. BROWNE (HYX)

NDB HYX 385	APP CRS 272°	Rwy Idg TDZE Apt Elev	5000 600 600
-----------------------	------------------------	-----------------------------	---

		MISSED APPROACH: Climb to 3000 via heading 270° and MBS R-145 to MBS VOR/DME and hold.
--	--	--

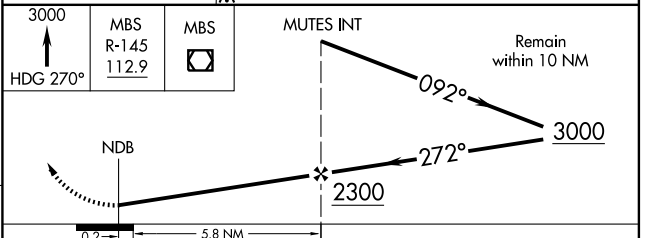
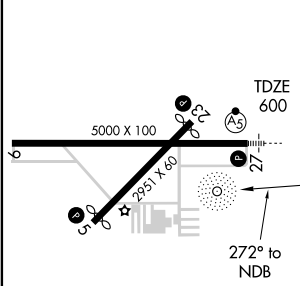
AWOS-3 118.325	SAGINAW APP CON * 120.95 235.625	GCO 121.725	UNICOM 122.8 (CTAF)
--------------------------	--	-----------------------	-------------------------------



EC-1, 09 APR 2009 to 07 MAY 2009

EC-1, 09 APR 2009 to 07 MAY 2009

ELEV 600



CATEGORY	A	B	C	D
S-27	1160-1 560 (600-1)		1160-1½ 560 (600-1½)	NA
CIRCLING	1160-1 560 (600-1)		1160-1½ 560 (600-1½)	NA
SAGINAW ALTIMETER SETTING MINIMUMS				
S-27	1200-1 600 (600-1)		1200-1½ 600 (600-1½)	NA
CIRCLING	1200-1 600 (600-1)		1200-1½ 600 (600-1½)	NA

SAGINAW, MICHIGAN

Orig-A 09071

SAGINAW COUNTY H. W. BROWNE (HYX)

43°26'N - 83°52'W

NDB RWY 27