

SAGINAW, MICHIGAN

AL-6474 (FAA)

RNAV (GPS) RWY 27

SAGINAW COUNTY H. W. BROWNE (HYX)

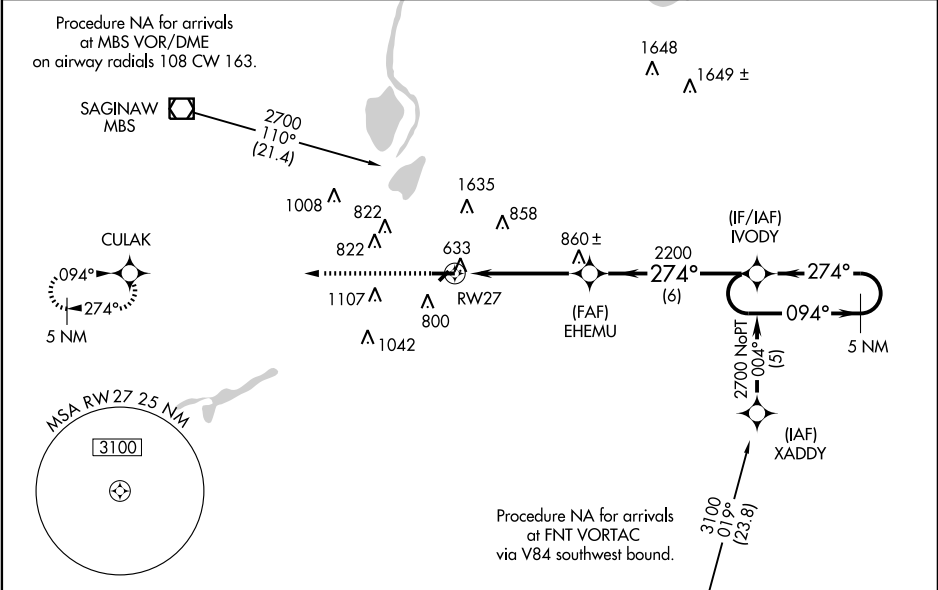
WAAS CH 90200 W27A	APP CRS 274°	Rwy Idg TDZE Apt Elev	5000 600 601
--	------------------------	-----------------------------	---

When local altimeter setting not received, use Saginaw MBS Intl altimeter setting and increase all DA 36 feet. Increase LNAV/VNAV all Cats visibility $\frac{1}{2}$, increase all MDA 40 feet. Baro-VNAV and VDP NA when using Saginaw MBS Intl altimeter setting. For uncompensated Baro-VNAV system. Procedure NA below -16°C (4°F) or above 54°C (130°F). For inoperative MALS R increase LPV visibility to 1 all Cats. DME/DME RNP-0.3 NA.



MISSED APPROACH:
Climb to 2800 direct
CULAK and hold.

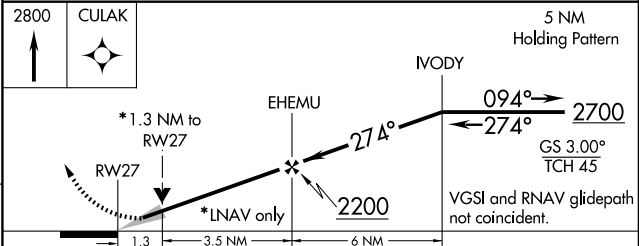
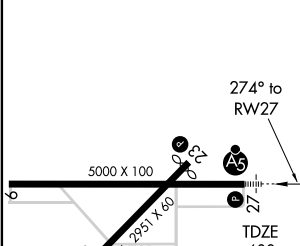
AWOS-3 118.325	SAGINAW APP CON * 120.95 235.625	GCO 121.725	UNICOM 122.8 (CTAF)
--------------------------	--	-----------------------	-------------------------------



EC-1, 11 MAR 2010 to 08 APR 2010

EC-1, 11 MAR 2010 to 08 APR 2010

ELEV 601



CATEGORY	A	B	C	D
LPV DA	850- $\frac{1}{2}$	250 (300- $\frac{1}{2}$)		NA
LNAV/VNAV DA	903- $\frac{1}{2}$	303 (400- $\frac{1}{2}$)		NA
LNAV MDA	1040- $\frac{1}{2}$	440 (500- $\frac{1}{2}$)	1040- $\frac{3}{4}$ 440 (500- $\frac{3}{4}$)	NA
CIRCLING	1100-1	499 (500-1)	1100-1 $\frac{1}{2}$ 499 (500-1 $\frac{1}{2}$)	NA

SAGINAW, MICHIGAN
Amdt 1A 09239

SAGINAW COUNTY H. W. BROWNE (HYX)

43°26'N - 83°52'W

RNAV (GPS) RWY 27