

SAGINAW, MICHIGAN

AL-6474 (FAA)

VOR/DME or GPS-A

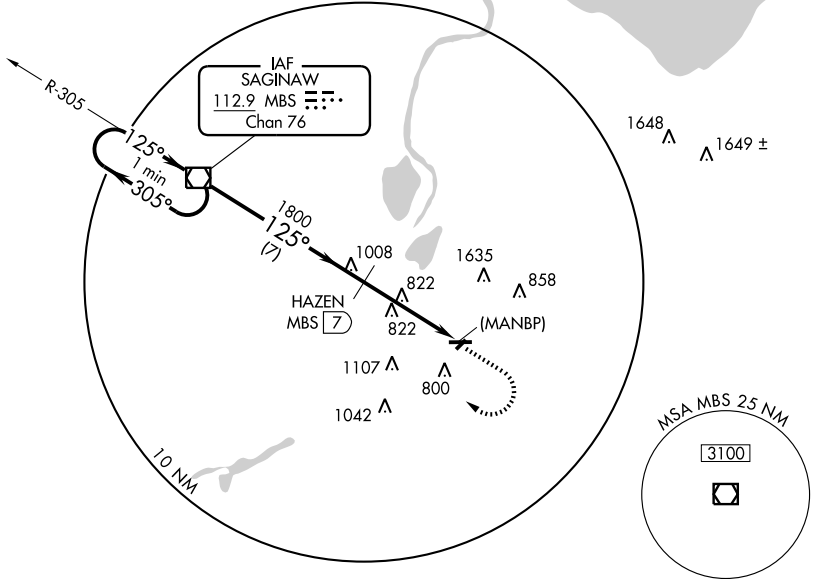
SAGINAW COUNTY H. W. BROWNE (HYX)

VOR/DME MBS 112.9 Chan 76	APP CRS 125°	Rwy Idg TDZE Apt Elev N/A N/A 600
---	------------------------	---

<p>▽ Obtain local altimeter setting on CTAF; when not available use Saginaw altimeter setting.</p> <p>△ NA</p>	<p>MISSED APPROACH: Climb to 1900, then climbing right turn to 3000 direct MBS VOR/DME and hold.</p>
--	--

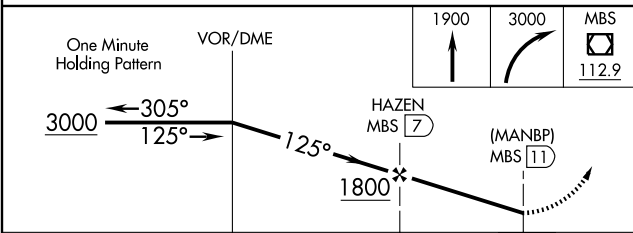
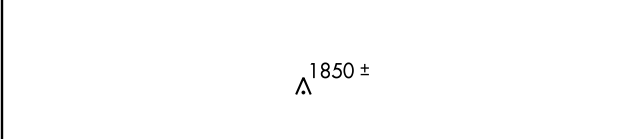
AWOS-3 118.325	SAGINAW APP CON * 120.95 235.625	GCO 121.725	UNICOM 122.8 (CTAF) 0
--------------------------	--	-----------------------	--

NoPT for arrivals on MBS VOR/DME
airway radials 238 CW 016.

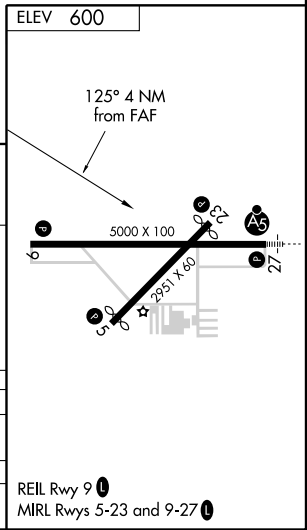


EC-1, 26 AUG 2010 to 23 SEP 2010

EC-1, 26 AUG 2010 to 23 SEP 2010



CATEGORY	A	B	C	D
CIRCLING	1160-1 560 (600-1)		1160-1½ 560 (600-1½)	NA
SAGINAW ALTIMETER SETTING MINIMUMS				
CIRCLING	1200-1 600 (600-1)		1200-1½ 600 (600-1½)	NA



SAGINAW, MICHIGAN
Amdt 3B 10098

SAGINAW COUNTY H. W. BROWNE (HYX)

43°26'N - 83°52'W

VOR/DME or GPS-A